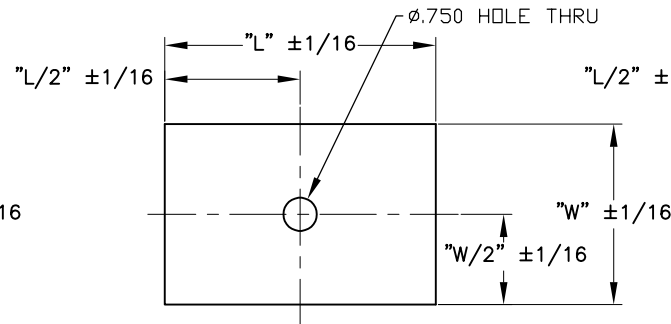
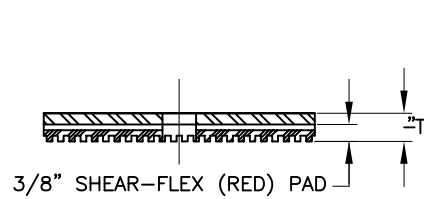
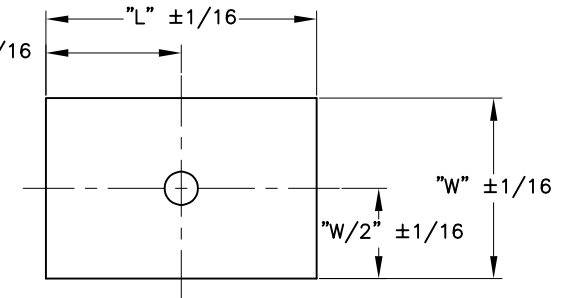
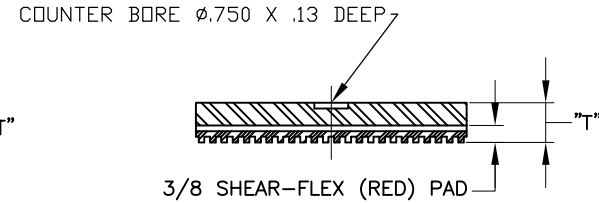


TYPE "A"



TYPE "B"



TYPE "C"

TYPE	PART NUMBER	MAXIMUM LOAD (LBS)		DIMENSIONS (INCHES)		
		STEADY	IMPACT	"L"	"W"	"T"
A-4	331929	280	200	2	2	7/8
A-9	331821	630	450	3	3	
A-16	331724	1120	800	4	4	
A-24	331627	1680	1200	6	4	
A-36	331422	2520	1800	6	6	1
A-48	331325	3360	2400	8	6	
A-64	331228	4480	3200	8	8	
A-80	331120	5600	4000	10	8	
A-96	331023	6720	4800	12	8	

TYPE	PART NUMBER	MAXIMUM LOAD (LBS)		DIMENSIONS (INCHES)		
		STEADY	IMPACT	"L"	"W"	"T"
B-4	331937	280	200	2	2	5/8
B-9	331732	630	450	3	3	
B-16	331635	1120	800	4	4	
B-24	331538	1680	1200	6	4	
B-36	331430	2520	1800	6	6	3/4
B-48	331333	3360	2400	8	6	
B-64	331236	4480	3200	8	8	
B-80	331139	5600	4000	10	8	
B-96	331031	6720	4800	12	8	

TYPE	PART NUMBER	MAXIMUM LOAD (LBS)		DIMENSIONS (INCHES)		
		STEADY	IMPACT	"L"	"W"	"T"
C-4	331945	280	200	2	2	3/4
C-9	331848	630	450	3	3	
C-16	331740	1120	800	4	4	
C-24	331643	1680	1200	6	4	
C-36	331546	2520	1800	6	6	7/8
C-48	331449	3360	2400	8	6	
C-64	331341	4480	3200	8	8	
C-80	331244	5600	4000	10	8	
C-96	331147	6720	4800	12	8	1

NOTE:

1. SPECIAL FLEX-PLATE SIZES, COMBINATIONS AND CAPACITIES AVAILABLE UPON REQUEST CONTACT VMC FOR AVAILABILITY.
2. PAD PATTERN MAY DIFFER.

OTHER MATERIALS, COMPOUNDS, OR FINISHES WITH EQUAL OR SUPERIOR PROPERTIES MAY BE SUBSTITUTED AS THEY BECOME AVAILABLE.



CERTIFIED FOR:

JOB NAME: _____

CUSTOMER: _____

CUSTOMER P.O.: _____

SALES ORDER: _____

MODEL SHEAR-FLEX COMBINATION SHEAR PAD AND PLATE



**VMC
GROUP**
THE POWER OF TOGETHER™

Bloomington, NJ 07403
Houston, TX 77041

SCALE:

NONE

SHEET:

1 OF 1

DRAWING NO.:

REVISION

